



**Yashika Industries**  
Manufacturing Construction Chemicals  
[www.yashikaindustries.in](http://www.yashikaindustries.in)



## About Company

We are the manufacturer of Construction Chemicals. Yashika Industries is serving Construction Industry from last 7 years. Yashika Industries manufactures complete range of construction chemicals & is also providing total cost-effective solutions & best services to Speciality Construction Chemical Industry.

Our products are broadly classified as Concrete Admixture, Waterproofing system, Industrial floor surfaces, Concrete repairs, Surface treatment, Fixing solution for Tiles, Protective Coating, Readyplast, Wall Finish & Liquid floor.

**Quality Focus:** Quality has always been an integral part of Management Philosophy. Ensuring International standard products to our esteemed customers, we have been accredited by ISO 9001, which emphasize the quality of system of each & every step of processing & “zero” defect operations.

**Value:** Consistently surpass customer expectations.

# CONCRETE ADMIXTURE

## YASHIKA PLAST NP

(High Range Water Reducing & Super Plasticizing Concrete Admixture)

### Description:

YASHIKA PLAST NP is an organic based liquid high performing super plasticizer and high range water reducing action. It enhances mobility, workability and obvious strengthening effects so that advantages of accelerating project mould turnover and construction speed. It can be used with most local cement and cementitious material with a margin on cement savings.

### Uses:

Precast manufacturer, Ready mix producers, Civil Contractors and DIY professional's use

YASHIKA PLAST NP in the production concrete for structures such as slabs and foundations, walls, columns, slender components with densely packed reinforcement, textures surface finishes, pre-stressed concrete, bridges and cantilever structures.

### Advantages:

- Offers high strength concrete with normal workability but lower water content
  - Provides a concrete mix with less cement but high strength and workability
  - Provides a good slump retention
  - No retardant at normal dosage
  - Reduces water up to 30 %
  - Concrete begins to flow easily and becomes self-levelling
  - Concrete becomes cohesive and does not have undesirable bleeding, segregation or loss of strength
  - Non corrosive, Reduces shrinkage
- Provides excellent flow properties, high early and final strength

### Packaging

YASHIKAPLAST NP is supplied in 1, 5, 10, 50, 100 and 200 litre drums.



Sr.no	Properties	Specifications
1	Physical Appearance	Dark brown liquid
2	Specific Gravity	1.210 + 0.020
3	Chloride content (%)	< 0.2 % (as per IS:9103 -1999)
4	Air entertainment	Less than 1%

# YASHIKA PLAST SP

(Advanced Low Viscosity High Performance Super-plasticiser, based on Polycarboxylic technology)

## Description:

YASHIKA PLAST SP is a unique combination of the latest generation super plasticisers, based on a polycarboxylic ether polymer with long lateral chains. This greatly improves cement dispersion. YASHIKA PLAST SP is a high performance super plasticiser intended for applications where high water reduction and long workability retention is required, YASHIKA PLAST SP combines the properties of water reduction and workability retention. It allows the production of high performance concrete and/or concrete with high workability.



## Uses:

- Self-compacting concrete
- Pumped concrete
- Concrete requiring long workability retention
- High performance concrete, RMC/ batching plants



## Advantages:

1. Low viscosity suitable for pumping of different grades of concrete to higher floors.
2. Higher E modulus.
3. Improved adhesion to reinforcing and prestressing steel.
4. Better resistance to carbonation.
5. Lower permeability.
6. Better resistance to aggressive atmospheric conditions.
7. Reduced shrinkage and creep
8. Increased durability

## Dosage :

The normal dosage range is between 0.2% to 1.6% of cementitious material in concrete mix design. Dosage outside the normal range quoted above can be used to meet Particular mix requirements. Over dosage may cause delay in the setting time and segregation.

## Packaging:

YASHIKA PLAST SP is available in 1 kg, 5 kg, 10 kg, 50 kg, 100 kg, 200 kg & 250 kg drums

## Typical Properties & Specifications:

Sr.no	Properties	Specifications
1	Appearance	Light yellow colour liquid
2	pH	Minimum 6.0
3	Volumetric mass @ 20°C	1.09 kg/litre
4	Chloride content	Nil to IS:456
5	Alkali content	Typically less than 1.5g Na <sub>2</sub> O equivalent / litre of admixture

# YASHIKA IWL

(Integral Waterproofing Liquid Admixture for Concrete & Mortar)

## Description :

IWL is a dark brown liquid based on ligno sulphonates which mixes readily with water and therefore, disperses evenly. IWL waterproofs by improving the quality of the concrete or mortar.

It reduces the water demand for required workability and, minimises segregation and bleeding.

The surfactants in IWL react in the cement, sand mixture to produce insoluble hydrophobic precipitates.

These have a two-fold effect in reducing the permeability of the mix as they both repel moisture, due to their hydrophobic nature, and act as pore blocking agents to reduce the inter connectivity of porosity in the mix.

## Uses:

1. To minimize permeability and increase the waterproofing properties of concrete and cement sand mortars for critical applications like roof slabs and screeds, basements, internal and \external plastering, bathroom floors, water tanks, sumps, drains etc.

## Advantages:

1. Provides integral protection to the mortar, render or screed, ensuring reduced permeability all through the applied material and not only on the surface.
2. Reduced water permeability minimizes efflorescence caused by transport of dissolved salts through the mix.
3. Entrained air bubbles assist in the formation of a stable cohesive mix, reducing segregation and bleeding and improving spreading and placing.
4. Air entrainment improves mortar workability, allowing lower water contents to be used.

## Consumption

The minimum dosage is 125ml and the maximum is 200ml per 50kgs of cement. Site trials shall be carried out to arrive at the optimum dosage.

## Packaging

YASHIKA IWL is supplied in 500ml, 1, 5, 20 and 200 litre containers.



## Typical Properties & Specifications:

Sr.no	Properties	Specification
1	Physical Appearance	Dark Brown liquid
2	Chloride content	<0.2% as per ISO:9001 2015
3	Compatibility	Can be used with all types of cements, including pozzolanic but not high Alumina Cement.
4	Permeability to water	Less than 15% as compared to 50% max IS : 2645-2023 compared to control sample
5	Setting time	No significant effect on setting time of concrete or mortar
6	Compressive Strength	Maintains Compressive strength equal to control concrete or mortar & can even improve on strength property if full advantage of water reduction potential is utilised
7	Workability	Improves workability at reduced water cement ratio



# CCEM HARDNER

## (Accelerating Admixture For Unreinforced Cement Concrete / Mortar)

It is supplied as a yellowish liquid. When added to cementitious mixture it accelerates hydration & enables the water content to perform more efficiently by dispersing agglomerated cement particles. This further improves strength by enabling water reduction to be made at constant work ability.



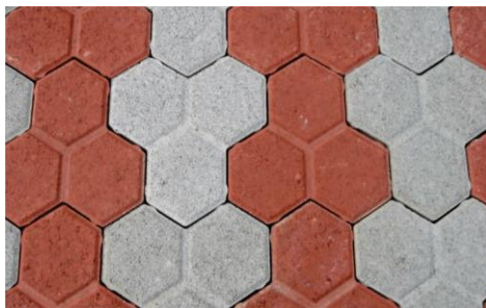
### Uses:

1. Used in cold weather concreting applications.
2. Mass concreting under sea water
3. Concrete hollow block manufacturing can be used for P.C.C. work, concrete bricks.



### Advantages:

1. Increase early strength gain allows earlier structural use & speeds completion time.
2. Saves time & money by allowing faster finishing & stripping of concrete form work.
3. Insulation & heating cost during curing time are reduced.
4. Earlier stripping & reuse of forms increase labor productivity.
5. Accelerated strength gain.



### Packing:

CCEM W is supplied in 1, 5, 10, 50, 100 & 200 litre drums.

Typical Properties & Specifications				
Sr. No.	Properties	Specifications		
1.	Specific Gravity	1.290 + 0.020		
2.	Physical Appearance	Yellowish liquid		
3.	Air entrainment	Less than 1%		
4.	Compatibility	Compatible with ordinary and rapid hardening portland cement but not high alumina or sulphate resisting cements		
5.	Setting Times	Typical results using CCEM Hardner are given below at 30%		
Trial Mix		W/C Ratio	IST	FST
Control		0.55	4 hours	6 hours
CCME Hardner		0.55	1 hrs. 45 mins.	3 hrs. 30 mins.

## ADHESIVE & BONDING AGENT

### MASTER JOINT



Master Joint is a jointing mortar which is superior water resistant cement based mortar specially formulated for joining blocks. It also ensures higher bond strength & durability at only 4mm thickness compared to the conventional mortar at 14-15mm replacing the conventional cement & sand mix mortar completely.



#### Uses:

1. To improve adhesive bond between two blocks.
2. For curing & overall smoothness after block work is done.

#### Advantages:

1. Meets & exceeds the requirements of National & International Standards.
2. It is a prepacked factory controlled which ensures consistent quality.
3. Excellent quality & adhesion with very cost effective.
4. Outstanding Waterproofing characteristics.

### MASTER PLASTER

Master Plaster is a pre-mixed ready to use cement based mortar for external plaster, which ensures quality consistency. It is specially crafted so that it provides stronger, more durable bonding with superior adhesive strength.



#### Uses:

1. It is used on fly ash bricks, concrete blocks, hollow blocks AAC blocks
2. No water curing is required after application.
3. Ready for a subsequent application just after 24 hrs of application.



#### Advantages:

1. Less rebound reducing wastage, drying & shrinkage cracks.
2. Improves labour productivity & reduces labour cost.
3. Consistent quality of plaster.

## MASTER TILE TA STD

It is high quality adhesion for permanent fixing of vitrified tiles both in damp & submerged conditions. It is cementitious adhesive ideal for concrete, plaster & also tile substrates.



### Uses:

1. Used in interior wet areas like kitchens & bathrooms.
2. Used for fixing wall tiles, insulating & acoustic boards.

### Advantages:

1. Ready to use & Cost Effective.
2. Excellent adhesion strength, practically no slip on vertical application.



---

## MASTER TILE



Master tile is packaged cementitious & cost-effective tile adhesive that ensures excellent bond on concrete & plastered surface.

Master tile is ready-mixed & specially formulated from OPC, selected fine sand & additives to improve its usage which is essential for tile laying properties.

- Uses:
1. Permanent fixing of ceramic & vitrified tiles.
  2. Helpful in adjusting after laying within 15 min.



### Advantages:

1. Brilliant adhesion strength, practically no slip on vertical application.
2. Fast working time hence reduces labour cost.
3. Outstanding Waterproofing characteristics
4. Very easy application & Cost Effective.



# BOND COAT

## Description:

It is a bonding agent, used to bond stone, plaster and any type of smooth low suction surface & eliminate hacking (making surface rough, by making impression on to the smooth concrete surface)  
Ex. Concrete Surfaces.



## Uses:

1. Any stone & concrete surfaces i.e., smooth & slippery.
2. It gives key (grip) to any surface.
3. A key (Grip) can be provided in two manners.
  - **Hacking** - Commonly called as “Tacha” which provides only mechanical key (Grip)
  - **Bonding Agent** - Bonding agent provides chemical bonding properties as well as mechanical bonding to the surface it is coated with.



## Instruction for use

### Surface Preparation:

BOND COAT, is used as a rush-coat / key – coat to provide a strong mechanical key on smooth concrete surfaces. it is suitable for use on walls, ceilings & stones. It is suitable for interior and exterior use. BOND COAT is designed for use with sand / cement, render, gypsum plaster, cement / lime renders machine plasters and spray plaster. It is suitable for use on smooth stone surface.

### Application:

BOND COAT, is applied by brush or roller at a rate of approx 1 kg / m<sup>2</sup> to provide a textured mechanical key. Stir the contents of BOND COAT thoroughly, before use and apply evenly as a single coat. Allow it to dry thoroughly for around 24 hours. Clean tools and equipment with water after use.

### Coverage :

Concrete repairs: Bond Coat should be use 1kg / m<sup>2</sup> Coat.

## MASTER PUTTY

Master Putty is a totally cement based putty.

Its utility is better for interior & exterior walls of buildings.

### Uses:

1. It can be simply applied on surface that is plastered.
2. When the surface is damp, Putty becomes a good & protective base.

### Advantages:

1. It is skim coated & based on white cement.
2. It has excellent quality of adhesion & prevents peel off caused by seepage.
3. It avoids need of paint & need for curing.
4. It provides excellent finish, enhances durability of paint & reduces consumption amount of paint.



## YASHIKA MICRO CONCRETE

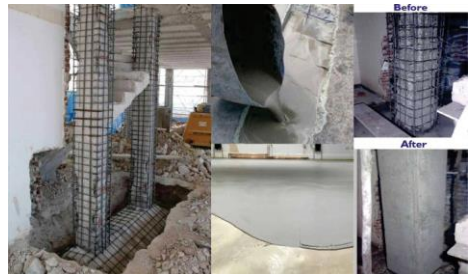
**(Flowable Mortar for Repairs of Damaged Reinforced Concrete Members)**

### Description:

YASHIKA MICRO CONCRETE is a ready to use dry powder which requires only addition of clean water at site to produce a free flowing non shrink repair micro concrete.

It is composed of good quality cement, properly selected aggregates & additives.

It is used & designed for repairing of damaged reinforced concrete elements like columns, beams & structure where the areas are restricted or not easily



accessible for proper placement of concrete using vibrator.

YASHIKA MICRO CONCRETE has excellent flowability, workability & proper particle size to reach small & congested reinforcement.

### Areas Of Application

1. Repair of damaged reinforced concrete elements like beams, columns, wall, etc. where access is restricted and compaction is not possible.
2. For Jacketing of RCC columns to increase load-taking capacity (strengthening of a vertical members).

### Benefits:

1. Pumpable - Can be pumped or poured into restricted locations.
2. Flowable - Flowable mortar hence does not require compaction.
3. Shrinkage compensation – Controlled expansion system which compensates for shrinkage and settlement in the plastic state.
4. Strength - Develops high initial and ultimate compressive strength.
5. Moisture resistant - Offers excellent resistance to moisture ingress.
6. Durability - Makes repaired sections highly durable & compatible to parent concrete.
7. Thickness build up - Can be applied at 100 mm thickness at one stroke.
8. Chloride content - Contains no chloride based additive so prevents corrosion of reinforcement.
9. Early reinstatement -Rapid strength gain helps in early reinstatement & removal of shuttering.

### Packaging & Coverage:

25 Kg. HDPE Bag, 1.3 m per 25 kg pack at 10 mm thickness Yield - 13 litres at a water/powder ratio of 0.17 & Fresh Wet 0 3 Density at 30 C is 2230 kg/m

### Typical Properties & Specification:

<u>Sr.no</u>	<u>Properties</u>	<u>Specification</u>	<u>Results</u>
1	Compressive Strength @ 30 <sup>0</sup> C	ASTM C 109: 99	15 N/mm <sup>2</sup> at 1 day 30 N/mm <sup>2</sup> at 3 days 50 N/mm <sup>2</sup> at 7 days 60 N/mm <sup>2</sup> at 28 days
2	Flexural Strength @30 <sup>0</sup> C	Flexural Strength @30 <sup>0</sup> C	6 N/mm <sup>2</sup> at 28 days
4	Expansion		0.45 %
6	Chloride content		0.2 %

# WATERPROOFING SYSTEM



## CCEM TWO COMPONENT /2K

### (Two Part Polymer Modified Flexible Waterproofing Coating)

Two component, flexible polymer modified cementitious coating for the protection & waterproofing of concrete surfaces, balconies, terraces, bathrooms & swimming pools.

#### Uses:

1. Protection of render or concrete with crack & caused by shrinkage.
2. Protection of concrete surfaces which may come in contact with sea-water, de-icing salts, such as sodium or calcium chloride & sulphate.

#### Advantages:

1. It forms a flexible layer impermeable to Co<sub>2</sub>, So<sub>2</sub>, chloride & Sulphate.
2. Economical & Cost Effective waterproofing system.

#### Packing & Coverage:

Units of 15kg. Comp A: 10kg bags  
Comp B: 5litre Jerry can One pack coverage 9m<sup>2</sup> to 13m<sup>2</sup> with 2mm thickness, depending on substrates.

#### Typical Properties & Specification:

Product Data		
	Comp A	Comp B
Consistency	Powder	Liquid
Color	Grey	Milky
Density(g/cm <sup>2</sup> )	1.4	1.010
Dry solid content	100	30



+



$$10+5=15\text{kg}$$

Sr.no	Properties	Specification
	Application Dat @ 30 C	
1	Color of mix	Grey
2	Mixing Ratio	Comp A: Comp B 2:1
3	Consistency	Brush application
4	Temp range	5C to 40C
5	Pot Life	30 mins.
	Final Performance:	
	Adhesion to concrete(N/mm <sup>2</sup> )	
6	After 28 days @ 30C	1.0
7	Elongation DIN 53504	30%

# CCEM BITU MAMBRANE

(Liquid Applied Single Component Elastomeric Waterproofing Membrane)

## Description :



It is highly elastic tough water proofing system based on modified bitumens, co-polymers & a carrier solvent. It is highly resistant to aggressive soils & soluble salts providing an effective continuous barrier & protection against water bourne damage.

- Uses:**
1. Applicable at wet areas, foundations, basements, terraces, retaining walls, bridge abutments.
  2. Can be used for inverted roofs & remedial repairs to felt, protected from exposure to direct sunlight.

- Advantages:**
1. High build properties ensures rapid application.
  2. Outstanding resistance to oxidation.
  3. Liquid application, easy to apply & no joint.

- Packaging:**
1. It is supplied in 1, 5, 20 & 100kg plastic bucket.
  2. It has a coverage of 30sq.ft. / 1kg, coverage rate will substrate condition.

## **Typical Properties & Specification:**

Sr.no	Properties	Specification
1	Color	Black
2	Form	Paste
3	Specific Gravity	1.100-/+0.010
4	Tensile Strength	>2.5N/mm <sup>2</sup>
5	Non-volatile content	65% Min.
6	Elongation at break	>500%
7	Cure time	24 hrs approx
8	Crack bridging	Up to 2mm





# CCEM SBR

## (High Quality Mortar & Screed Modifier Cum Bonding Agent)

It is a milky white latex based on a modifier styrene butadiene copolymer emulsion. It can be mixed with cements sand-cement mortars & concretes. It gives high bond strength to existing concrete, masonry & reinforcing steel.

### Uses:

1. Concrete repairs & floor toppings.
2. Waterproofing of tanks & pools
3. Repair of large cracks.
4. Bonding of screeds & renders.

### Advantages:

1. Easy to apply, easy miscibility & compatible with all common hydraulic cements.
2. Excellent water resistance- Provides waterproof screeds, plaster & permeability slurries.
3. Improved tensile & flexural strength allow thin application.

### Application

#### 1. Waterproofing:

CCEM SBR with cement in ratio 1:1.5 by weight & apply in two coats.

#### 2. Repair Mortar:

CCEM SBR at 10 - 15% by weight of cement in 1:3 cement: fine sand mix for use as repair mortar along with 20% water by weight of cement to the workable consistency.

#### 3. Bond coat in Repair:

CCEM SBR with cement in 1:1 ratio by weight & apply on a pre-wetted substrate overlay repair mortar when the bond coats in tacky.

### Packaging:

1. Supplied in 500ml, 1, 5, 10, 50 & 100 litre containers.

### Coverage :

Concrete repairs: CCEM SBR should be use 200 ml / 50 kg. of cement.  
Bonding agent: CCEM SBR has Coverage of approximate 6 – 8 m<sup>2</sup> / litre depending on surface condition.



### Typical Properties & Specification:

Mechanical Properties	Control	CCEM SBR Compressive Strength (N/mm <sup>2</sup> )
3 days	11.5	13.0
7 days	13.0	14.8
28 days	22.0	24.5
Tensile strength (N/mm <sup>2</sup> ) @ 28 days	2.5	3.8
Flexural strength (N/mm <sup>2</sup> ) @ 28 days	5.0	6.6

# YASHIKA DAMP GUARD SMART

## Description:

Yashika DAMP PROOF SMART is a high-performance fiber reinforced elastomeric, single pack, liquid applied waterproofing and vapors proofing membrane. The product is supplied ready to use straight from the bucket. The consistency is similar to that of thick emulsion paint, the standard product being supplied as a white membrane coating. The membrane is flexible, elastic and is resistant to light abrasion and UV light.

YASHIKA DAMP GUARD SMART Paint is water based and safe to apply onto damp substrates by brush, roller or spray. Membranes are typically touch dry in one hour.



## Benefits:

**Basements:** as part of a waterproofing system.

**Floors:** above and below screeds to provide a damp proof membrane.

**Walls:** can be used under a render as a waterproof layer.

**Walls:** can be used to cover up damp stains on painted areas.

**Crack bridging:** Unmatched crack bridging ability due to elastomeric properties.

**Adhesion:** Strong adhesion to masonry substrates

**Bunds, silage and sewage tanks:** protects concrete from silage attack.

**Anti carbonation:** Reduces carbon dioxide and chloride ion diffusion thus protecting re-bars against corrosion. On the basis that the carbon dioxide permeability of a coating is ten times less than its water vapors permeability, 0.6mm thick dry film of the membrane will have a carbon meters of still air. (Recommendation for anti CO<sub>2</sub> coatings at least 50m)

## Yield :

For the membrane to give maximum water/vapor protection the thickness of the dried material should be 0.6mm. To achieve this, apply two coats each at a coverage rate of 0.5 liters /m<sup>2</sup>. The required quantity of material may vary depending on the substrate texture and absorption.

## Packaging :

1 Kg, 5 kg & 20 kg Plastic Buckets.

## Typical Membrane Properties

Sr. No.	Properties	Specification
1	Specific Gravity@25 °C	1.1
2	Viscosity	2800-4300Pas
3	Resistance to Pressurized Water Penetration	0.6mm thick dry film of the membrane will resist a water pressure of 0.2N/mm <sup>2</sup> (=20mtr head of water)
4	Water Vapor Permeability	0.6mm thick dry film of the membrane conditioned at room temperature for 7 days prior to test gave a water vapors permeability <4gm <sup>2</sup> /24hours at20OC/75%RH(BS3177)
5	Carbon Dioxide Permeability	on the basis that the carbon dioxide permeability of coating is ten times less than its water vapors permeability, 0.6mm thick dry film of the membrane will have a carbon.

# ENGINEERING GROUT

## YASHIKA GROUT GP 50

(General purpose, non-shrink, free flow cementitious grout)

### Description:

YASHIKA GROUT GP 50 is a ready-mixed, non-shrink, non-metallic, flowable, high-strength structural grout.

YASHIKA GROUT GP 50 remains stable without failure from compressive loading, impact, lateral thrusts, high heat or continuous vibration. Plastic settlement and shrinkage are prevented by the shrinkage compensated mix design. Low mixing water demand results in the hardened grout giving good freeze-thaw stability, low water absorption plus resistance to oil, sea water and mild alkali attack. The grout is chloride free, can be safely used in contact with steel and can be placed in section thicknesses of 10mm up to 100 mm.



### Uses:

YASHIKA GROUT GP 50 is used where non-shrink, high strength, structural, durable grout is required such as: precise machine bases, pump and equipment bases, structural columns, machine tools, compressors, and anchor bolts.

### Advantages:

- Prepacked, in factory ensures consistency in supply requires addition of water to develop a free flow, non shrinking and high strength gaining grout.
- Material shrinkage is offset by expansion during green condition and later on by maintain original volume.
- Self-levelling by nature.
- Easy placement and filling of under base of machinery.
- Contains no chlorides, or corrosive ingredients.
- Similar appearance to concrete.



## Typical Properties & Specifications:

Compressive Strength (BS 1881: Part 116, 1983 & ASTM C 1107) @ w/p ratio 0.19 (flowable)  
Note : Cubes cast were kept under resistant before testing to simulate site condition.  
Size of the cubes used 70.6mm x 70.6mm x 70.6mm tested at 300C.

Sr no	Properties	Specification
1	Chloride content	Nil as per BS:5075
2	AGE IN DAYS	COMPRESSIVE STRENGTH IN N/mm <sup>2</sup>
3	1 3 7 28	15 N/mm <sup>2</sup> 25 N/mm <sup>2</sup> 32 N/mm <sup>2</sup> 48 N/mm <sup>2</sup>
4	Unrestrained expansion	1 to 4%
5	Consistency Life	20 min @ 30° C
6	Density	2100 kg/m <sup>3</sup>
7	Initial Setting Time	Approx 5 hrs
8	Flow on Flow Table	17 to 24 cm

## Packing: & Yield:

YASHIKA GROUT GP 50 grout is supplied in 25 kg single lined HDPE bags.  
yield 13.7 litres at flowable consistency.

## YASHIKA GROUT GP 65

(General purpose, non-shrink, high strength free flow cementitious grout)

### Description:

YASHIKA GROUT GP 65 is a premixed cement based, nonferrous, non-shrink grout, exhibiting good flow characteristics. This economic performance grout offers the advantage of low water requirements and medium to high compressive strengths. YASHIKA GROUT GP 65 should be specied for general purpose construction site applications where the major emphasis is on ease of application. low water absorption plus resistance to oil, sea water and mild alkali attack. The grout is chloride free, can be safely used in contact with steel and can be placed in section thicknesses of 10mm up to 100mm.



### Uses:

YASHIKA GROUT GP 65 is used for static and dynamic loads.

1. Grouting of base plates of turbines, compressors, boiler feed pumps etc.,
2. It can also be used for anchoring a wide range of fixings.
3. These include masts, anchor bolts and fence posts.

## Advantages:

- Prepacked, in factory ensures consistency in supply requires addition of water to develop a free flow, non shrinking and high strength gaining grout.
- Material shrinkage is offset by expansion during green condition and later on by maintain original volume.
- Self-levelling by nature.
- Easy placement and filling of under base of machinery.
- Contains no chlorides, or corrosive ingredients.
- Similar appearance to concrete.

## Packing:

YASHIKA GROUT GP 65 grout is supplied in 25 kg single lined HDPE bags.

## Yield:

One bag (25 kg.) of YASHIKA GROUT GP 65 will yield 12.5 litres at pourable consistency & 13.3 litres at flowable consistency.

## Typical Properties & Specifications:

Compressive Strength

(BS 1881: Part 116,1983 & ASTM C 1107)

@ w/p ratio 0.18 (flowable), w/p ratio 0.16 (Pourable).

Sr.no	Properties	Specifications	
1	Age in days	COMPRESSIVE STRENGTH in N/mm <sup>2</sup>	
		Flowable w/p = 0.18	Pourable w/p = 0.16
2	1	24 N/mm <sup>2</sup>	27 N/mm <sup>2</sup>
	3	40 N/mm <sup>2</sup>	50 N/mm <sup>2</sup>
	7	55 N/mm <sup>2</sup>	65 N/mm <sup>2</sup>
	28	65 N/mm <sup>2</sup>	75 N/mm <sup>2</sup>

## Note:

Cubes cast were kept under resistant before testing to simulate site condition. Size of the cubes used 70.6mm x 70.6mm x 70.6mm tested at 300C.

Flexural Strength  
(BS 4551, 1998)

Sr no	Age in days	FLEXURAL STRENGTH In N/mm <sup>2</sup>
3	1 3 7 28	2.5 N/mm <sup>2</sup> 7 N/mm <sup>2</sup> 9 N/mm <sup>2</sup> 10 N/mm <sup>2</sup>
4	Unrestrained expansion	1 to 4%
5	Consistency Life	20 min @ 30 <sup>0</sup> C
6	Density	2000 kg/m <sup>3</sup>
7	Initial Setting Time	Approx 5 hrs
8	Flow on Flow Table	17 to 24 cm



# INDUSTRIAL FLOORING SYSTEM

## YASHIKA FLOOR SHIELD CR

(Dry-shake, non-metallic floor hardener)

### Description:

YASHIKA FLOORSHIELD CR is a carbo random aggregates, plasticizer and cement binder. It is an economical concrete floor hardener recommended for both interior and exterior use. YASHIKA FLOORSHIELD CR produces a hard, dense, sear resistant surface which resists corrosion and absorption grease, alkalis and most chemicals.



### Uses:

- 1) Lobbies and waiting rooms of commercial and public buildings.
- 2) Corridors and washrooms in institutional and public buildings.
- 3) Restaurants and dairies.
- 4) Auto showrooms and service centres
- 5) Factory and warehouse floors
- 6) Commercial and industrial facilities
- 7) Steel mills and generating plants

### Advantages:

- 1) Hardens concrete in one economical operation
- 2) Use of hard and properly graded aggregates increases the wear resistance over plain concrete floors.
- 3) Ready-to-use factory blend eliminates messy and expensive job mixing and minimizes errors.
- 4) Non-rusting materials make it possible to use YASHIKA FLOORSHIELD CR outdoors as well as indoors.

### Packing & Coverage:

Packing: YASHIKA FLOORSHIELD CR is available in 25 kg. woven bag.

Coverage: For Light duty:  $3 \text{ kg/m}^2$

Medium duty:  $5 \text{ kg/m}^2$



### Typical Properties & Specification:

Sr.no	Properties	Specification
1	Finishing	Smooth, but anti-skid
2	Hardness on Mho's scale	8 to 9

# YASHIKA FLOOR SHIELD MT

(Dry-shake, metallic aggregate surface hardener)

## Description:

YASHIKA FLOOR SHIELD MT is a ready to use metallic floor hardener comprised of clean and well graded iron aggregates, special additives and Portland cement. The iron aggregates are selected from ground cast iron, then kiln fired to remove all organic materials. YASHIKA FLOOR SHIELD MT can only be used inside. It is available in a natural concrete colour.

## Uses:

- 1) Industrial floor surfaces subject to heavy or frequent traffic, impact and abrasion.
- 2) Industrial floors needing additional abrasion and impact resistance at areasonable installation costing.
- 3) Areas where surface dusting is unacceptable.
- 4) Manufacturing plants including car, truck and tractor assembly plants.
- 5) Processing plants, warehouses and loading docks.
- 6) Foundries and industrial plants.



## Advantages:

- 1) High impact resistant floor.
- 2) Ductile metal aggregates resist high point loading and impact.
- 3) Improved resistance to chemicalsoils / greases / solvents.
- 4) Long service life/low maintenance.
- 5) Resistant to dusting, spalling and deterioration.
- 6) A wear-resistant floor with a smooth or non-slip, durable finish.
- 7) A floor which reduces wear on the wheels of material handling equipment.

## Packing & Coverage:

YASHIKA FLOOR SHIELD MT is available in 25 kg. woven bag.

### Coverage:

Light duty: 3 kg/m<sup>2</sup>  
Medium duty: 5 kg/m<sup>2</sup>  
Heavy duty: 7 kg/m<sup>2</sup>

## Typical Properties and Specifications:

Sr No.	Properties	Specification
1	Finishing	Smooth, but Anti-skid
2	Hardness on Mhos scale	8 to 9
3	Physical Appearance	Grey colour powder

## Principals We Follow

**HONESTY:** Yashika is honest & truthful in all their dealings & we do not deliberately mislead or deceive others by misrepresentations, overstatements, partial truths, selective omissions or any other means.

**PROMISE:** Keeping & Trustworthiness - Ethical executives are worthy of trust, they are candid & forthcoming in supplying relevant information & correcting misapprehensions of fact & thus we make sure that every reasonable effort to fulfill the letter & spirit of their promises & commitment.

**LOYALTY:** We believe our motives are worthy of trust, demonstrate fidelity & loyalty to persons & institutions by friendship in adversity, support & devotion to duty. We do not use or disclose information in confidence for personal advantage.

**CONCERN FOR OTHERS:** Our executives are caring, compassionate, benevolent & kind. They like the golden rule, help those in need & seek to accomplish their business objectives in a manner that causes the least harm & the greatest positive good.

## Contact us:

Office:- 14, Dharmika apt, Kamalnagar, Hirawadi,  
Panchvati, Nashik-422003.

Ph: 0253 4025852 / 8237760602.

Factory:- Gat no 5, at Mohadari, Post- Chincholi,  
Tal- Sinner, Nashik-422102.

Mob.- 8237760602

Mail:-

yashikaindustriesinfo@gmail.com

www.yashikaindustries.in

